



28 Howards Way, Gayton, King's Lynn, PE32 1WJ

24058



- * Detached house * 3 Bedrooms * Brand new * Garage *
- * Local builder * Sought after location *

£425,000

RUSSEN & TURNER

17 High Street, King's Lynn, Norfolk PE30 1BP | Tel:01553 768187

Russen & Turner is the trading name of Russen and Turner Ltd
A company registered in England & Wales. Company No. 4899005
Registered office: 22-26 King Street, King's Lynn, Norfolk, PE30 1HJ

BRIEF DESCRIPTION:

Phase III Howards Way is now available following the incredible success of phases I & II. All the properties for sale in this new phase are 3- and 4-bedroom detached houses with garages and all will be built to the excellent standards to which the highly respected, KMH builders of Gayton have become synonymous.

All houses will have air-source heating, a large garage (approx. 20ft6 x 12ft1), offer a very light, airy, and open plan feel and all kitchens will boast a fitted oven, hob & dishwasher. The builder can offer the properties with a choice of kitchen & worktop etc. and on some of the house a choice of 3 or 4 bedrooms and much more. There is even the potential to purchase a plot as a fully serviced self-build.

This property style proved popular on phase 2 of Howards Way and offers accommodation briefly comprising entrance hall, W.C., 17ft lounge and a superb 22ft 'living-kitchen' which has doors to the rear garden, a vaulted ceiling, and a door to the utility room which in turn leads to the generously sized garage. To the 1st floor are 3 bedrooms with the principal bedroom offering an ensuite shower room and family bathroom. The houses are also available as a 4 bedroom with another bedroom being built over the garage (price would then be £455,000).

Outside the gardens will be laid to lawn with fencing to the boundaries, outside lighting, private parking and a generously sized garage.

For more information on how you can secure one of these brand-new homes, call Russen & Turner to make an appointment to visit the site.

N.B. Information within these details may be subject to change and the information provided is to be used for guidance purposes only.

Council Tax Band: .

EPC RATING: Awaiting EPC

LOCATION:

Gayton is a village approximately 6 miles east of the historic market town of King's Lynn. The village offers a range of local amenities including shop, school, church, public house and bus links to and from King's Lynn.

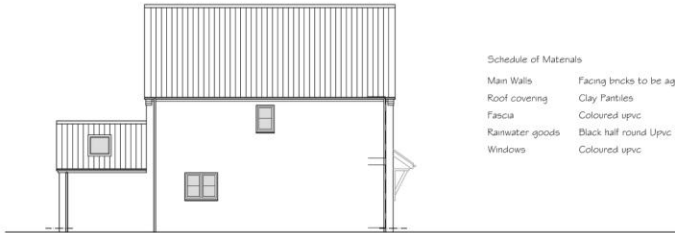
HOW WE CAN HELP:

If you have a property to sell we can offer you a free, no obligation market appraisal. We can also pass your details on to an independent mortgage advisor for advice and we may also be able to carry out a survey for you. For more information please call us.

HOUSE TYPE 3A - PLOTS 12,15,18,20 & 28

This drawing is Copyright of Andrew Young Architectural Design and should not be used or reproduced without the Authors consent.
 2. This drawing has been prepared for Planning and Building Regulation purposes only.
 3. It is the responsibility of the recipient of this drawing to ensure it has been used for the intended purpose and to ensure it is not used for any other purpose without the consent of the Author.
 4. The Author shall not be liable for any loss or damage, including consequential loss or damage, arising from the use of this drawing.
 5. The Author shall not be liable for any loss or damage, including consequential loss or damage, arising from the use of this drawing.
 6. The Author shall not be liable for any loss or damage, including consequential loss or damage, arising from the use of this drawing.
 7. The Author shall not be liable for any loss or damage, including consequential loss or damage, arising from the use of this drawing.
 8. The Author shall not be liable for any loss or damage, including consequential loss or damage, arising from the use of this drawing.
 9. The Author shall not be liable for any loss or damage, including consequential loss or damage, arising from the use of this drawing.
 10. The Author shall not be liable for any loss or damage, including consequential loss or damage, arising from the use of this drawing.

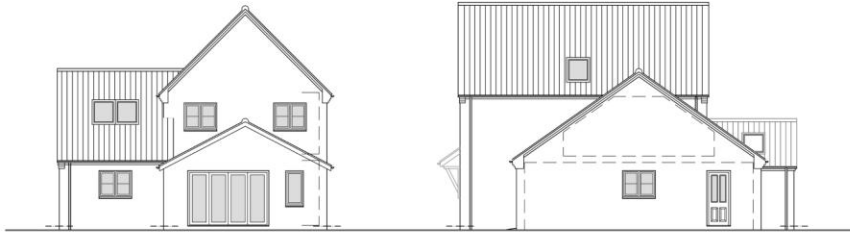
SCALE REFERENCE - 50mm LINE



Side Elevation

Schedule of Materials

Main Walls	Facing bricks to be agreed
Roof covering	Clay Pantiles
Fascia	Coloured upvc
Rainwater goods	Black half round Upvc
Windows	Coloured upvc



Rear Elevation

Side Elevation

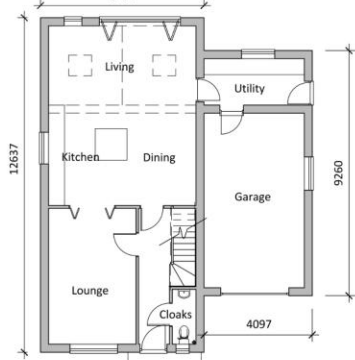
HOUSE TYPE 3A - PLOTS 12,15,18,20 & 28

This drawing is Copyright of Andrew Young Architectural Design and should not be used or reproduced without the Authors consent.
 2. This drawing has been prepared for Planning and Building Regulation purposes only.
 3. It is the responsibility of the recipient of this drawing to ensure it has been used for the intended purpose and to ensure it is not used for any other purpose without the consent of the Author.
 4. The Author shall not be liable for any loss or damage, including consequential loss or damage, arising from the use of this drawing.
 5. The Author shall not be liable for any loss or damage, including consequential loss or damage, arising from the use of this drawing.
 6. The Author shall not be liable for any loss or damage, including consequential loss or damage, arising from the use of this drawing.
 7. The Author shall not be liable for any loss or damage, including consequential loss or damage, arising from the use of this drawing.
 8. The Author shall not be liable for any loss or damage, including consequential loss or damage, arising from the use of this drawing.
 9. The Author shall not be liable for any loss or damage, including consequential loss or damage, arising from the use of this drawing.
 10. The Author shall not be liable for any loss or damage, including consequential loss or damage, arising from the use of this drawing.

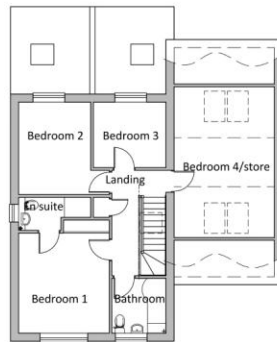
SCALE REFERENCE - 50mm LINE



Front Elevation
6186



Ground Floor Layout



First Floor Layout



This plan is for illustrative purposes only and should be used as such by any prospective purchaser. Whilst every attempt has been made to ensure the accuracy of these particulars and the floorplan contained here, which are thought to be materially correct, though their accuracy is not guaranteed and they do not form any part of any contract, measurements of doors, windows, rooms and any other items are approximate and no responsibility is taken for any error, omission or mis-statement. None of the appliances mentioned in the details have been tested and we cannot therefore guarantee their condition, operability or working order.
 Plan made with Metropix ©2014

Please note that Russen & Turner are committed to following the guidelines set out by the EU's Second Money Laundering Directive which was laid out before parliament at the end of November 2003, the regulations apply from 1st of March 2004. This involves offences under the Terrorism Act 2000 (as amended by the anti-terrorism Crime and Security Act 2001) and the Proceeds of Crime Act 2002.

